

User Guide – Interval, Smart Meter Data Report

This is a reference guide to assist you with understanding the information that's in your meter data summary report.

The summary report contains;

- Summary Table
- Graph of Energy Flows
- Graph of Average Daily Load Profile.

Please refer to the below key terms and their definitions to understand the summary report.

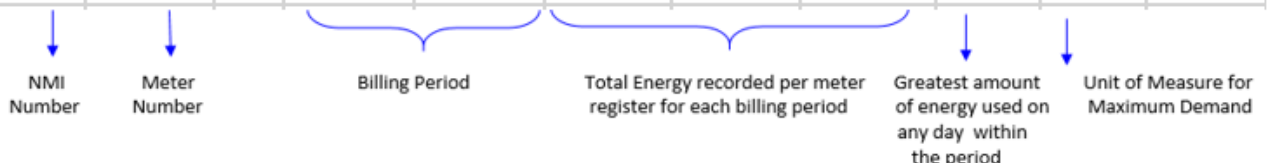
KEY TERM	DEFINITION
NMI	National Meter Identifier. This is the 10 digit code we use to identify your site's electricity supply.
Meter Serial Number	This is the serial number
UOM	Unit of Measure. This how we measure the amount of energy you are using
kWh	Kilowatt hour. This is the unit of measure for your electricity supply.
General Supply	This refers to the register on your meter that records how much energy you are using for your main supply. All meters will have this register.
Controlled Load	This refers to the register on your meter that records how much energy you are using for specific supplies that are wired into this meter, for example, electric hot water systems. Not all meters have this register.
Generation	This refers to the register on your meter that records the amount of energy you are generating and putting back into the grid.
Maximum Demand	Maximum demand is the greatest amount of electricity used on any one day within the specified period.
Max Demand Unit Of Measure	Maximum demand Unit of Measure is the measure of electricity used to show your consumption. Generally this will be kilowatt (kW).

Summary Table

This includes the total energy consumption and generation associated with your NMI aggregated under the categories of:

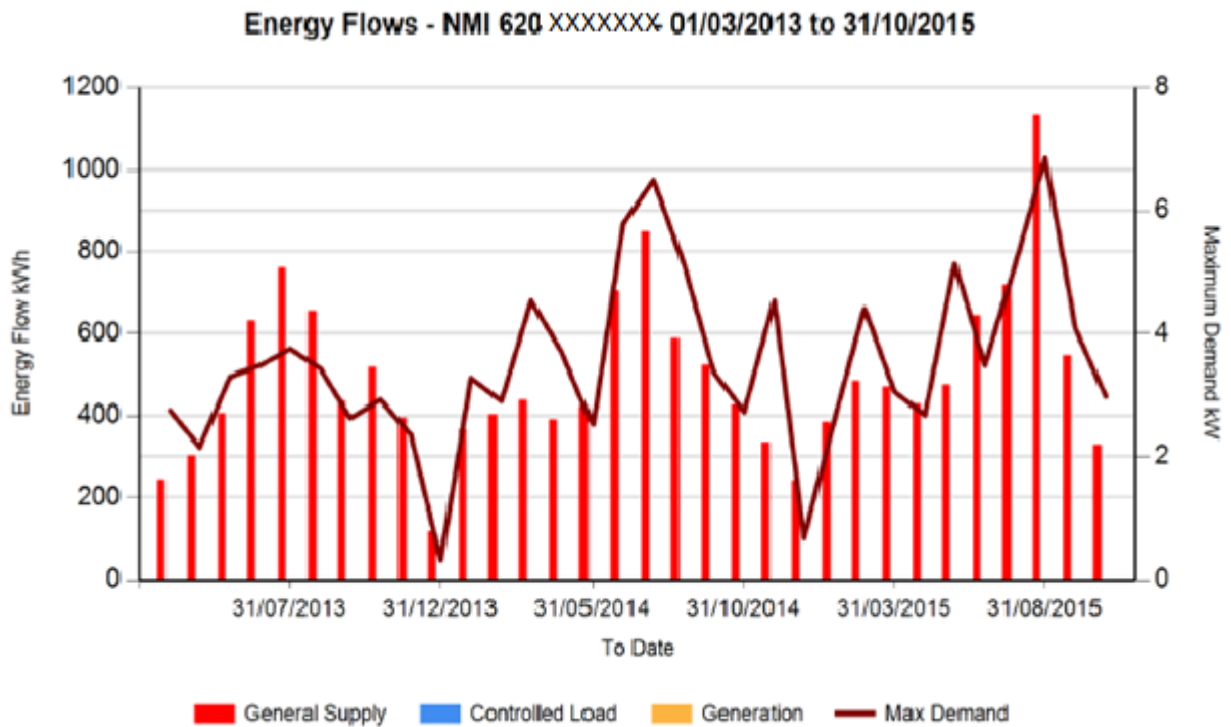
* General supply * Controlled Load * Generation

NMI	Meter Serial	UOM	From Date	To Date	General Supply	Controlled Load	Generation	Max Demand	Demand UOM	Includes Estimates
620xxxxxx	Dxxxxxxx	kWh	01/03/2013	31/03/2013	243.867	0.000	0.000	2.750	kW	N
620xxxxxx	Dxxxxxxx	kWh	01/04/2013	30/04/2013	301.185	0.000	0.000	2.150	kW	N
620xxxxxx	Dxxxxxxx	kWh	01/05/2013	31/05/2013	405.631	0.000	0.000	3.300	kW	N
620xxxxxx	Dxxxxxxx	kWh	01/06/2013	30/06/2013	630.930	0.000	0.000	3.476	kW	N
620xxxxxx	Dxxxxxxx	kWh	01/07/2013	31/07/2013	759.522	0.000	0.000	3.750	kW	N
620xxxxxx	Dxxxxxxx	kWh	01/08/2013	31/08/2013	654.837	0.000	0.000	3.426	kW	N
620xxxxxx	Dxxxxxxx	kWh	01/09/2013	30/09/2013	435.330	0.000	0.000	2.626	kW	N
620xxxxxx	Dxxxxxxx	kWh	01/10/2013	31/10/2013	518.621	0.000	0.000	2.926	kW	N



Energy Flow Graph

This graph provides a pictorial summary of the information contained in the summary table. It also includes the maximum demand for each period.



Average Energy Flows Graph

This graph summarises your average daily load profile over the period.

